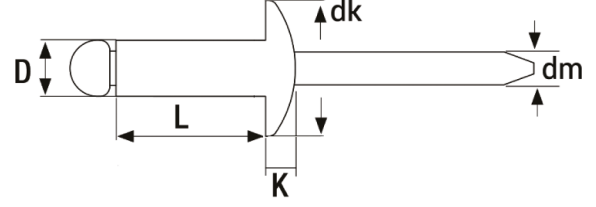
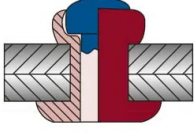


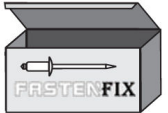
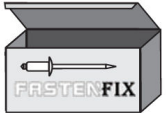
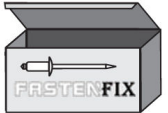


STANDART PERÇİN ST / ST BOMBE KAFA OPEN TYPE RIVET ST / ST DOME HEAD



GÖVDE / BODY: ÇELİK (SAE 1008) - ÇİNKO KAPLAMA / STEEL (SAE 1008) - ZINC PLATED

ÇİVİ / NAİL: ÇELİK (SAE 1008) - ÇİNKO KAPLAMA / STEEL (SAE 1008) - ZINC PLATED

Ölçülendirme / Dimensions						Kuvvet / Forces		Ürün / Product		
Çap Diameter (D) [+0,08/-0,15]	Ø		Uzunluk Length (L) [+1/-0,2]	K (Max.)		dk (Max.)	dm (Max.)	Kesme Shear (N)	Kopma Tensile (N)	
	Min.	Max.		Min.	Max.					
3.0	3.1 - 3.2	6.0	1.0 - 3.5	1.30	6.50	2.00	915	1125		
		8.0	3.5 - 5.0							
		10.0	5.0 - 7.0							
		12.0	7.0 - 9.0							
		14.0	9.0 - 11.0							
		16.0	9.0 - 12.5							
		18.0	12.0 - 14.5							
		20.0	13.0 - 16.5							
3.2	3.2 - 3.3	6.0	1.0 - 3.5	1.30	6.70	2.10	1060	1285		
		8.0	3.5 - 5.0							
		10.0	5.0 - 7.0							
		12.0	7.0 - 9.0							
		14.0	9.0 - 11.0							
		16.0	9.0 - 12.5							
		18.0	12.0 - 14.5							
		20.0	13.0 - 16.5							

* Tüm ölçüler mm cinsindedir. / *All dimensions in mm

* Tüm boy ölçülerinde [+0,1/-0,5] mm tolerans değeri olasıdır. / *A tolerance value of [+0,1/-0.5] mm is possible for all length dimensions.

* Renkli perçinler için RAL kodu belirterek teklif isteyiniz. / *For colored rivets, please request a quote by specifying the RAL code.


* Web Sitesi ve uygulama videosu için QR kodu okutun. / * Scan the QR code for web site and application video.

* Daha fazla bilgi için bizimle iletişime geçebilirsiniz. / * You can contact us for more information.





STANDART PERÇİN ST / ST BOMBE KAFA OPEN TYPE RIVET ST / ST DOME HEAD

Ölçülendirme / Dimensions						Kuvvet / Forces		Ürün / Product		
Çap Diameter (D) [+0,08/-0,15]	Ø		Uzunluk Length (L) [+1/-0,2]	K (Max.)		dk (Max.)	dm (Max.)	Kesme Shear (N)	Kopma Tensile (N)	
	Min.	Max.		Min.	Max.					
4.0	4.1 - 4.2	6.0	1.0 - 3.0	1.70	8.50	2.60	1550	1990	02.012211.040060	
		8.0	3.0 - 5.0						02.012211.040080	
		10.0	4.0 - 6.5						02.012211.040100	
		12.0	6.0 - 8.5						02.012211.040120	
		14.0	7.0 - 10.5						02.012211.040140	
		16.0	8.0 - 12.5						02.012211.040160	
		18.0	10.0 - 14.5						02.012211.040180	
		20.0	12.0 - 16.0						02.012211.040200	
		25.0	16.0 - 21.0						02.012211.040250	
		30.0	21.0 - 26.0						02.012211.040300	
		35.0	26.0 - 30.5						02.012211.040350	
		40.0	30.5 - 35.0						02.012211.040400	
4.8	4.9 - 5.0	6.0	1.0 - 2.5	2.00	10.10	3.10	2300	2920	02.012211.048060	
		8.0	2.5 - 4.0						02.012211.048080	
		10.0	4.0 - 6.0						02.012211.048100	
		12.0	6.0 - 8.0						02.012211.048120	
		14.0	8.0 - 10.0						02.012211.048140	
		16.0	8.0 - 12.0						02.012211.048160	
		18.0	10.0 - 14.0						02.012211.048180	
		20.0	12.0 - 16.0						02.012211.048200	
		25.0	16.0 - 21.0						02.012211.048250	
		30.0	21.0 - 25.0						02.012211.048300	
		35.0	25.0 - 30.0						02.012211.048350	
		40.0	30.0 - 35.0						02.012211.048400	
45.0	35.0 - 40.0	02.012211.048450								
50.0	40.0 - 45.0	02.012211.048500								

* Tüm ölçüler mm cinsindedir. / *All dimensions in mm

* Tüm boy ölçülerinde [+0,1/-0,5] mm tolerans değeri olasıdır. / *A tolerance value of [+0,1/-0.5] mm is possible for all length dimensions.

* Renkli perçinler için RAL kodu belirterek teklif isteyiniz. / *For colored rivets, please request a quote by specifying the RAL code.


* Web Sitesi ve uygulama videosu için QR kodu okutun. / * Scan the QR code for web site and application video.

* Daha fazla bilgi için bizimle iletişime geçebilirsiniz. / * You can contact us for more information.





STANDART PERÇİN ST / ST BOMBE KAFA OPEN TYPE RIVET ST / ST DOME HEAD

Ölçülendirme / Dimensions						Kuvvet / Forces		Ürün / Product		
Çap Diameter (D) [+0,08/-0,15]	Ø		Uzunluk Length (L) [+1/-0,2]	K (Max.)		dk (Max.)	dm (Max.)	Kesme Shear (N)	Kopma Tensile (N)	
	Min.	Max.		Min.	Max.					
5.0	5.1 - 5.2	6.0	1.0 - 2.5	2.10	10.50	3.10	2575	3255	02.012211.050060	
		8.0	2.5 - 4.0						02.012211.050080	
		10.0	4.0 - 6.0						02.012211.050100	
		12.0	6.0 - 8.0						02.012211.050120	
		14.0	8.0 - 10.0						02.012211.050140	
		16.0	8.0 - 12.0						02.012211.050160	
		18.0	10.0 - 14.0						02.012211.050180	
		20.0	12.0 - 16.0						02.012211.050200	
		25.0	16.0 - 21.0						02.012211.050250	
		30.0	21.0 - 25.0						02.012211.050300	
		35.0	25.0 - 30.0						02.012211.050350	
		40.0	30.0 - 35.0						02.012211.050400	
		45.0	35.0 - 40.0						02.012211.050450	
		50.0	40.0 - 45.0						02.012211.050500	
6.0	6.1 - 6.2	8.0	1.5 - 3.0	2.50	12.60	4.00	4000	5000	02.012211.060080	
		10.0	3.0 - 5.0						02.012211.060100	
		12.0	5.0 - 7.0						02.012211.060120	
		14.0	7.0 - 9.0						02.012211.060140	
		16.0	7.0 - 11.0						02.012211.060160	
		18.0	11.0 - 13.0						02.012211.060180	
		20.0	11.0 - 15.0						02.012211.060200	
		25.0	14.0 - 19.5						02.012211.060250	
		30.0	19.5 - 24.5						02.012211.060300	
		35.0	24.0 - 29.0						02.012211.060350	
		40.0	29.0 - 34.0						02.012211.060400	
6.4	6.5 - 6.6	8.0	6.0 - 8.0	2.70	13.40	4.20	4350	5400	02.012211.064080	
		10.0	8.0 - 10.0						02.012211.064100	
		12.0	8.0 - 12.0						02.012211.064120	
		14.0	10.0 - 14.0						02.012211.064140	
		16.0	12.0 - 16.0						02.012211.064160	
		18.0	16.0 - 21.0						02.012211.064180	
		20.0	21.0 - 25.0						02.012211.064200	
		25.0	25.0 - 30.0						02.012211.064250	
		30.0	30.0 - 35.0						02.012211.064300	
		35.0	35.0 - 40.0						02.012211.064350	
		40.0	40.0 - 45.0						02.012211.064400	

* Tüm ölçüler mm cinsindedir. / *All dimensions in mm

* Tüm boy ölçülerinde [+0,1/-0,5] mm tolerans değeri olasıdır. / *A tolerance value of [+0,1/-0.5] mm is possible for all length dimensions.

* Renkli perçinler için RAL kodu belirterek teklif isteyiniz. / *For colored rivets, please request a quote by specifying the RAL code.

* Web Sitesi ve uygulama videosu için QR kodu okutun. / * Scan the QR code for web site and application video.

* Daha fazla bilgi için bizimle iletişime geçebilirsiniz. / * You can contact us for more information.

